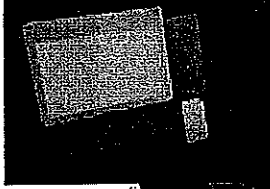


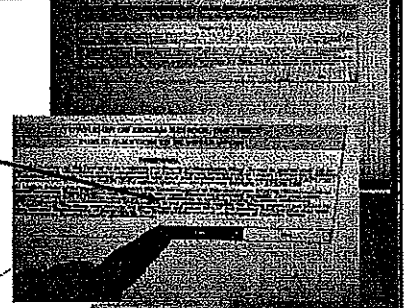
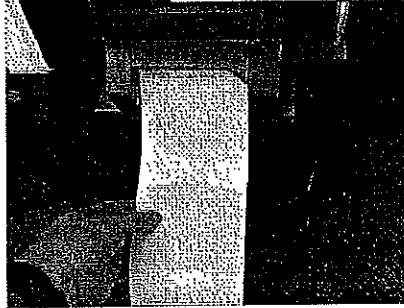
Voting in Machine

To begin voting, insert your card.



- After Voter receives Activation Summary Card, they will be instructed to insert the card into the voting machine with the cut corner on the top right.
- The voting machine will automatically activate for that Voter's registered voting Municipality, Ward and District.
- The screen of the Voting Machine will now display the voter's ballot to be voted.

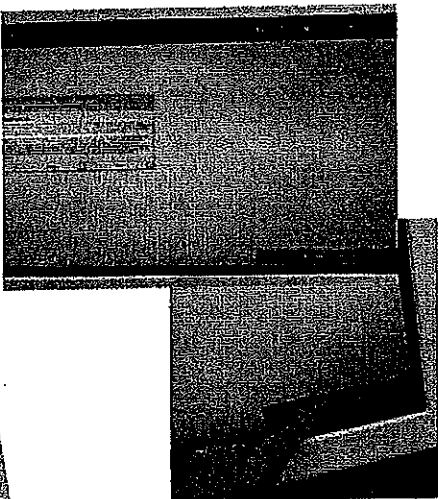
Voter votes ballot by using touch screen and prompts.



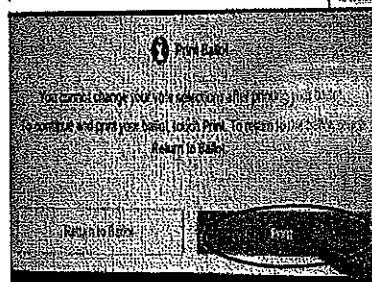
24

3/11/2022

Voting in Machine

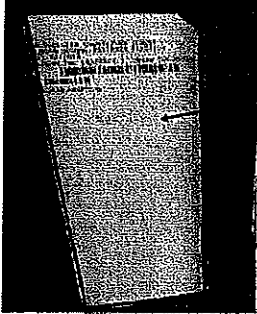


- Once Voter has completed all selections on ballot they will select "Print Ballot" located in lower right corner.
- Voter will be prompted to confirm "Print Ballot".
- Selections may not be changed once a ballot is printed.



25

Voting in Machine- Casting Ballot

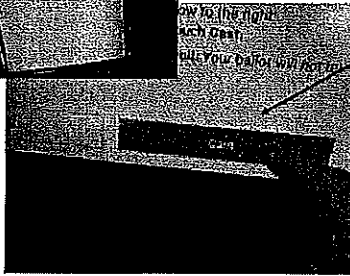


Once the voter selects "Print Ballot" on the touch screen the Voter's selections will be printed on their Activation Summary Card and be displayed for the voter to review in the window on the right-hand side.

Reminder- The Voter's selections are attached to their Municipality, Ward and District and NOT their name or address. Voters' names and addresses do not register on the Activation Summary Cards.

After Voter reviews their Activation Summary Card print-out they may now select "Cast" on the touch screen.

The Voter's ballot has been cast.



The Activation Summary Card will be deposited into the machine after vote has been cast.

